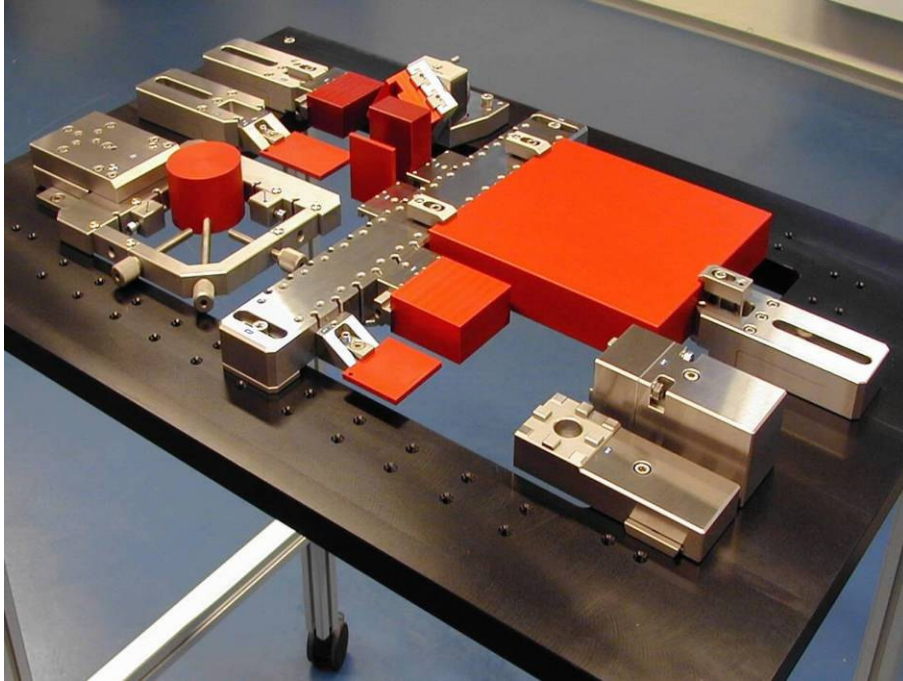


# Ионекс

Тольятти: (8482) 25-82-40, (8482) 25-82-85, (927) 775-49-65, (906) 128-12-68, [tlt@ionexedm.ru](mailto:tlt@ionexedm.ru)  
Москва: (499) 782-61-17, (916) 627-56-24, (926) 300-12-42, [msh@ionexedm.ru](mailto:msh@ionexedm.ru)  
Томск: (3822) 23-16-80, (909) 543-16-80, [toms@ionexedm.ru](mailto:toms@ionexedm.ru)

[www.ionexedm.ru](http://www.ionexedm.ru)

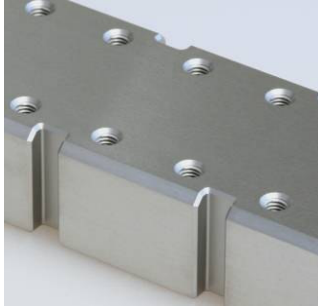
## CLAMPING TOOLS WEDM



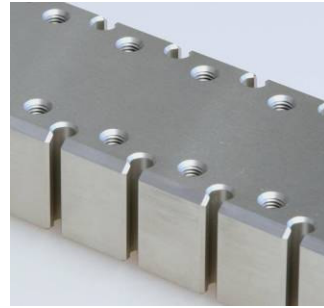
## REFERENCE RULERS

We offer two types of reference rulers.

All rulers are grounded within tolerance  $-0.01$ , flatness of surface up to  $0.001/100$   
Rulers length and pitch of assembling grooves for screws M8 is made according to the type of machine.



**standard - D**



**LOGIC - L**

System **LOGIC** - for further extension of clamping possibilities with high-speed components.



**Reference ruler type D**



**Reference ruler type L**

## VERTICALLY ADJUSTABLE RULERS WZ

Rulers for easy setting of workpiece plane.  
Construction makes longitudinal and cross setting of plane possible.  
Range of vertical setting is  $\pm 0,25\text{mm}$ .



**WZ150L**

Adjustable ruler  $Z\pm 0.25\text{mm}$   
System **LOGIC** for further extension of clamping possibilities  
Dimensions: 150x60x30 mm, groove for screw M8  
Maximum workpiece weight: 50kg



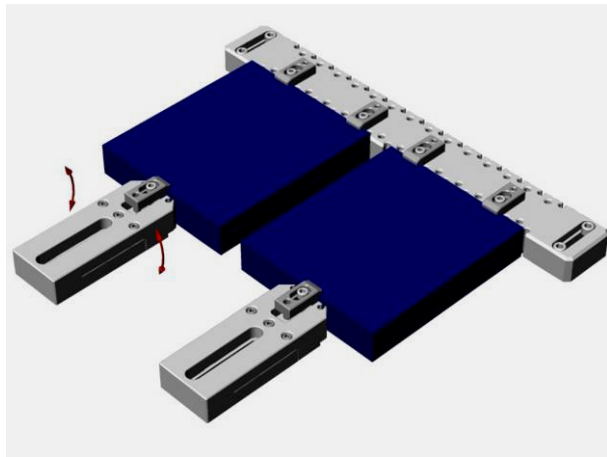
**WZ220L**

Adjustable ruler  $Z\pm 0.25\text{mm}$   
System **LOGIC** for further extension of clamping possibilities  
Dimensions: 220x66x30 mm, groove for screw M8  
Maximum workpiece weight: 60kg

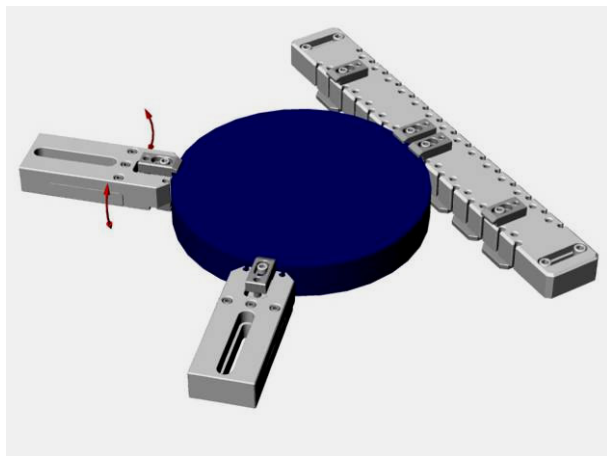
## EXAMPLES OF WORKPIECES FIXATION



Workpieces fixation by means of 4 rulers WZ150L

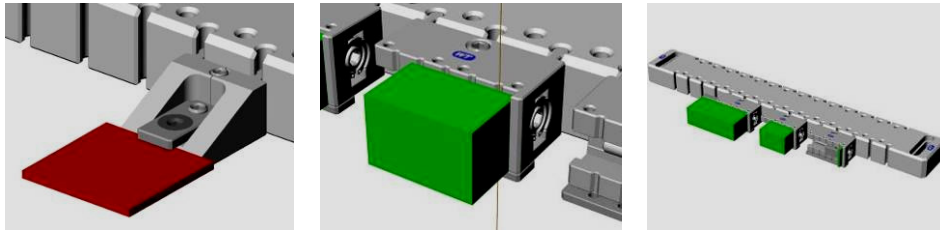


Workpieces fixation by means of 2 supporters WZ150L and a reference ruler



Round workpiece fixation by means of 2 supporters WZ150L and a reference ruler

## ACCESSORIES FOR REFERENCE RULERS



**WSD25L**

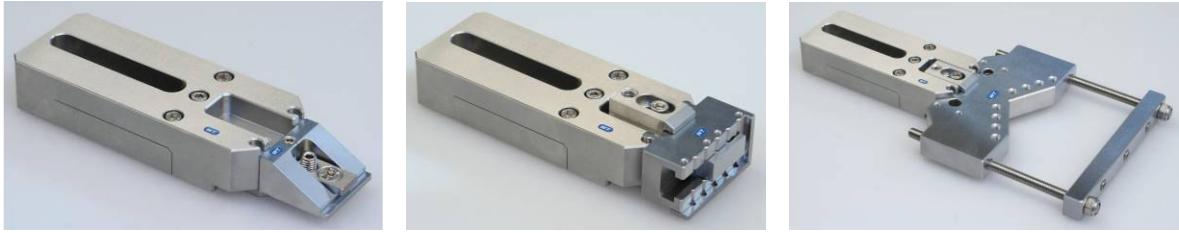
Segment for thin workpieces  
Mounting on reference rulers type **L**  
Dimensions: 35x40x20mm



**WS60L**

Vice for small workpieces  
Range of clamping: 0-100mm  
Mounting on reference rulers type **L**  
Dimensions: 60x35x30mm

## ACCESSORIES FOR SUPPORTERS WZ



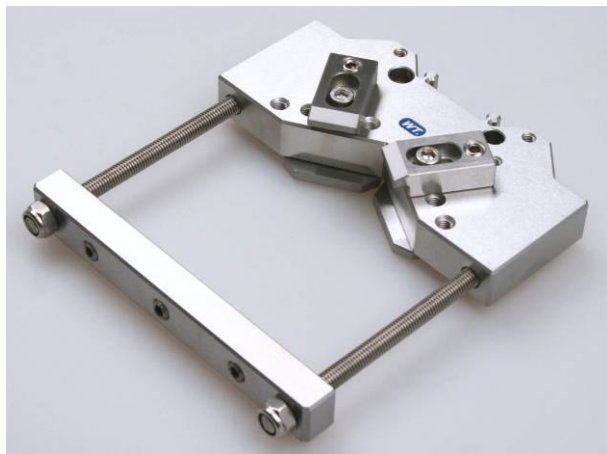
**WSD34LZ**

Segment for thin workpieces  
Mounting on supporters WZ150L or WZ220L  
Dimensions: 42x40x20mm



**WS60LZ**

Vice for small workpieces  
Range of clamping: 0-100mm  
Mounting on supporters WZ150L or WZ220L  
Dimensions: 60x35x30mm



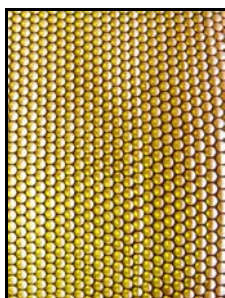
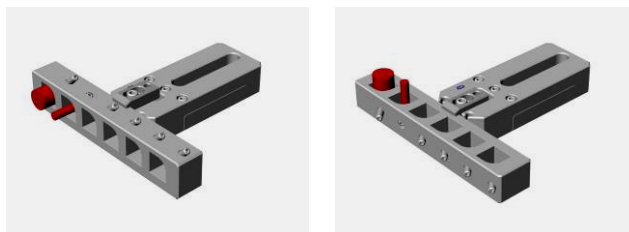
**WNP120L**

Prism for round or rectangular workpieces  
Range of clamping:  $d10-120\text{mm}$ ,  $120 \times 120$   
Mounting on supporters WZ150L, WZ220L  
Dimensions:  $86 \times 150 \times 19\text{mm}$



**WPR200**

Prism for small round workpieces  
Range of clamping:  $d3-20\text{mm}$   
Mounting on supporters WZ150L, WZ220L  
Dimensions:  $200 \times 36 \times 28\text{mm}$



# Ионекс

Тольятти: (8482) 25-82-40, (8482) 25-82-85, (927) 775-49-65, (906) 128-12-68, [tlt@ionexedm.ru](mailto:tlt@ionexedm.ru)  
Москва: (499) 782-61-17, (916) 627-56-24, (926) 300-12-42, [msk@ionexedm.ru](mailto:msk@ionexedm.ru)  
Томск: (3822) 23-16-80, (909) 543-16-80, [tomsk@ionexedm.ru](mailto:tomsk@ionexedm.ru)

[www.ionexedm.ru](http://www.ionexedm.ru)

## CLAMPING SYSTEM WEDM 3R



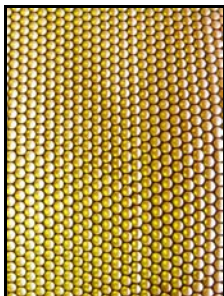
**WL75-M8**

Reference element sequence 200.xJ-X  
Dimensions: L=75mm, mounting holes for screws M8



**WL150-M8**

Reference element sequence 200.xJ-X  
Dimensions: L=150mm, mounting holes for screws M8



# Ионекс

Тольятти: (8482) 25-82-40, (8482) 25-82-85, (927) 775-49-65, (906) 128-12-68, [tlt@ionexedm.ru](mailto:tlt@ionexedm.ru)  
Москва: (499) 782-61-17, (916) 627-56-24, (926) 300-12-42, [msk@ionexedm.ru](mailto:msk@ionexedm.ru)  
Томск: (3822) 23-16-80, (909) 543-16-80, [tmsk@ionexedm.ru](mailto:tmsk@ionexedm.ru)

[www.ionexedm.ru](http://www.ionexedm.ru)



## ACCESSORIES FOR CLAMPING SYSTEM WEDM 3R

Clamping panels enable quick aligning in three axes.  
Workpiece can be preset outside the machine on a stone plate.  
Clamp all the unit into the machine and start machining without waiting time.



**WND10**

Adjustable clamping panel  
Possible aligning in three axes  $\pm 1^\circ$   
Max weight: 10kg  
Dimensions: 130x85x39mm



**WND15HP**

Adjustable clamping panel  
Possible aligning in three axes  $\pm 1^\circ$   
Max weight: 15kg  
Dimensions: 140x90x48mm



**WS150 HP**

Vice for larger workpieces  
Range of clamping: 0-150mm  
Max weight: 15kg  
Mounting on WND15HP  
Dimensions: 205x100x25mm



**WNP175**

Prism for round or rectangular workpieces  
Range of clamping:  $d_{10}$ -175mm, 175x175  
Max weight: 15kg  
Mounting on WND15HP  
Dimensions: 205x128x25mm



# Ионекс

Тольятти: (8482) 25-82-40, (8482) 25-82-85, (927) 775-49-65, (906) 128-12-68, [tlt@ionexedm.ru](mailto:tlt@ionexedm.ru)

Москва: (499) 782-61-17, (916) 627-56-24, (926) 300-12-42, [msk@ionexedm.ru](mailto:msk@ionexedm.ru)

Томск: (3822) 23-16-80, (909) 543-16-80, [tomsk@ionexedm.ru](mailto:tomsk@ionexedm.ru)

[www.ionexedm.ru](http://www.ionexedm.ru)



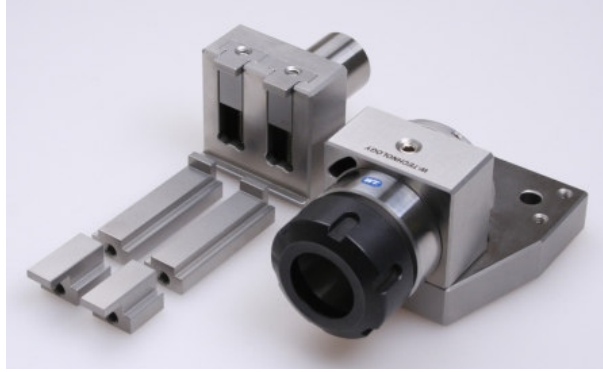
### **WND10 SET**

Set for small workpieces of round or rectangular profile  
Max workpiece dimension: d120mm, 120x120mm  
Max workpiece weight: 10kg



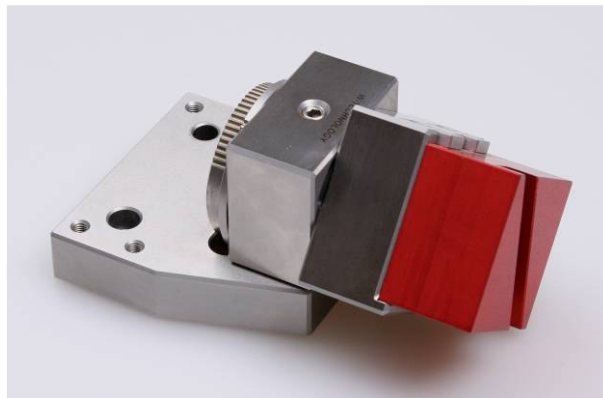
### **WNDP15HP SET**

Set for workpieces of round or rectangular profile  
Max workpiece dimension: d175mm, 175x175mm  
Max workpiece weight: 15kg



**WDP56 SET**

Dividing appliance for workpieces of round and rectangular profile  
Range of clamping: d2-20mm, vice 0-100mm  
Mounting on WND10, WND15HP,  
or directly on the machine table.  
Angle adjustment with the aid of dividing disc by 1°  
or sine ruler.



**WDP56**

Dividing appliance - vice  
Range of clamping: 0-100mm



**WDP56-ER32**

Dividing appliance – collet clamp ER32  
Range of clamping: d2-20mm



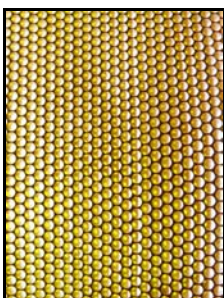
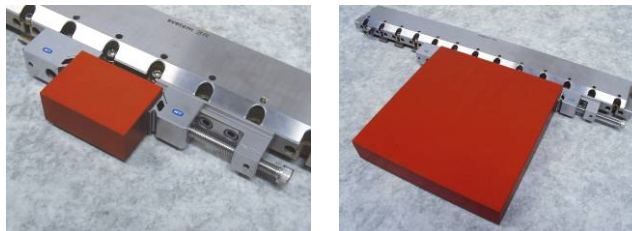
**WRS56-ITS**

Vice for workpiece aligning in two axes with angle setting.  
Range of clamping: 0-100mm, angle setting 0-360°  
Mounting: for clamping system ITS or MACRO  
Dimensions: 56x56x94 mm



**WS5494 SET**

Vice for reference rulers sequence 3R-239-xxx



# Ионекс

Тольятти: (8482) 25-82-40, (8482) 25-82-85, (927) 775-49-65, (906) 128-12-68, [tlt@ionexedm.ru](mailto:tlt@ionexedm.ru)

Москва: (499) 782-61-17, (916) 627-56-24, (926) 300-12-42, [msk@ionexedm.ru](mailto:msk@ionexedm.ru)

Томск: (3822) 23-16-80, (909) 543-16-80, [tomsk@ionexedm.ru](mailto:tomsk@ionexedm.ru)

[www.ionexedm.ru](http://www.ionexedm.ru)

# TOOL UNITS FOR WIRE EDM MACHINES

## CHARMILLES



**WL330D SET**

Basic set for ROBOFIL 240  
Dimensions: grooves for screws M8, distance 290mm  
Max workpiece weight: 200kg



**WL330L SET**

Basic set for ROBOFIL 240  
System **LOGIC** for further extension of clamping possibilities  
Dimensions: grooves for screws M8, distance 290mm  
Max workpiece weight: 200kg



**WL454D SET**

Basic set for ROBOFIL 390  
Dimensions: grooves for screws M8, distance 414mm  
Max workpiece weight: 200kg



**WL454L SET**

Basic set for ROBOFIL 390  
System **LOGIC** for further extension of clamping possibilities  
Dimensions: grooves for screws M8, distance 414mm  
Max workpiece weight: 200kg



**WL460D SET**

Basic set for ROBOFIL 440  
Dimensions: grooves for screws M8, distance 420mm  
Max workpiece weight: 200kg



**WL460L SET**

Basic set for ROBOFIL 440  
System **LOGIC** for further extension of clamping possibilities  
Dimensions: grooves for screws M8, distance 420mm  
Max workpiece weight: 200kg

## AGIE



**WL410D SET**

Basic set for AGIE series 2  
Dimensions: grooves for screws M8, distance 370mm  
Max workpiece weight: 200kg



**WL410L SET**

Basic set for AGIE series 2  
System **LOGIC** for further extension of clamping possibilities  
Dimensions: grooves for screws M8, distance 370mm  
Max workpiece weight: 200kg



**WL510D SET**

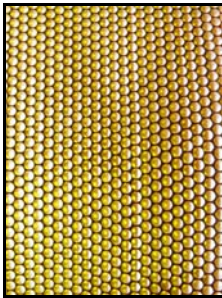
Basic set for AGIE series 3  
Dimensions: grooves for screws M8, distance 470mm  
Max workpiece weight: 200kg





**WL510L SET**

Basic set for AGIE series 3  
System **LOGIC** for further extension of clamping possibilities  
Dimensions: grooves for screws M8, distance 470mm  
Max workpiece weight: 200kg



# *Ионекс*

**Тольятти:** (8482) 25-82-40, (8482) 25-82-85, (927) 775-49-65, (906) 128-12-68, [tlt@ionexedm.ru](mailto:tlt@ionexedm.ru)

**Москва:** (499) 782-61-17, (916) 627-56-24, (926) 300-12-42, [msk@ionexedm.ru](mailto:msk@ionexedm.ru)

**Томск:** (3822) 23-16-80, (909) 543-16-80, [tomsk@ionexedm.ru](mailto:tomsk@ionexedm.ru)

[www.ionexedm.ru](http://www.ionexedm.ru)

## SODIC / FANUC



**WL490D SET**

Basic set for SODIC AQ325 / FANUC a1i  
Dimensions: grooves for screws M8, distance 450mm  
Max workpiece weight: 200kg



**WL490L SET**

Basic set for SODIC AQ325 / FANUC a1i  
System **LOGIC** for further extension of clamping possibilities  
Dimensions: grooves for screws M8, distance 450mm  
Max workpiece weight: 200kg

## MITSUBISHI



**WL370D SET**

Basic set for MITSUBISHI FA10-S,-V  
Dimensions: grooves for screws M8, distance 330mm  
Max workpiece weight: 200kg



**WL370L SET**

Basic set for MITSUBISHI FA10-S,-V  
System **LOGIC** for further extension of clamping possibilities  
Dimensions: grooves for screws M8, distance 330mm  
Max workpiece weight: 200kg



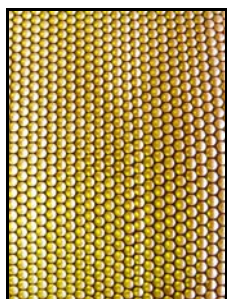
**WL470D SET**

Basic set for MITSUBISHI FA20-S,-V  
Dimensions: grooves for screws M8, distance 430mm  
Max workpiece weight: 200kg



**WL470L SET**

Basic set for MITSUBISHI FA20-S,-V  
System **LOGIC** for further extension of clamping possibilities  
Dimensions: grooves for screws M8, distance 430mm  
Max workpiece weight: 200kg



# *Ионекс*

**Тольятти:** (8482) 25-82-40, (8482) 25-82-85, (927) 775-49-65, (906) 128-12-68, [tlt@ionexedm.ru](mailto:tlt@ionexedm.ru)

**Москва:** (499) 782-61-17, (916) 627-56-24, (926) 300-12-42, [mск@ionexedm.ru](mailto:mск@ionexedm.ru)

**Томск:** (3822) 23-16-80, (909) 543-16-80, [tomsк@ionexedm.ru](mailto:tomsк@ionexedm.ru)

**[www.ionexedm.ru](http://www.ionexedm.ru)**